

1 1 ブロック解答

1.

① 2×3^2 ② $2^2 \times 5$ ③ $2 \times 5 \times 7$ ④ $2 \times 5 \times 11$

2.

① $-3 < +5$ ② $-1 > -4$ ③ $+1.7 > -1.5$ ④ $-\frac{3}{2} > -\frac{9}{4}$

3.

① 5 ② -2 ③ -9 ④ -5 ⑤ 2 ⑥ 19
⑦ 7 ⑧ -9 ⑨ -1 ⑩ 0 ⑪ 4 ⑫ $\frac{13}{12}$

4.

① 7 ② -1 ③ -2 ④ 3 ⑤ -7 ⑥ -1
⑦ -6 ⑧ -19 ⑨ 44 ⑩ $-\frac{7}{18}$

5.

① 20 ② 42 ③ -81 ④ -80 ⑤ 0 ⑥ -15
⑦ 210 ⑧ -700 ⑨ 4.5 ⑩ 81 ⑪ -81 ⑫ 48
⑬ 4 ⑭ -8 ⑮ -1 ⑯ -2 ⑰ 48 ⑱ 2
⑲ -9 ⑳ $\frac{1}{4}$ ㉑ 30 ㉒ 8 ㉓ -125 ㉔ $\frac{1}{4}$

6.

① -10 ② -19 ③ 6 ④ -4 ⑤ 5 ⑥ -8
⑦ -1 ⑧ 7 ⑨ -2900 ⑩ 12 ⑪ 7 ⑫ 14

1 2 ブロック 解答

1.

- ① $-6x$ ② $\frac{1}{2}a$ ※ $\frac{a}{2}$ も可 ③ $4(y-9)$ ④ $8a^3$
⑤ $\frac{y}{9}$ ※ $\frac{1}{9}y$ も可 ⑥ $-\frac{a}{5}$ ※ $-\frac{1}{5}a$ も可 ⑦ $\frac{a+4}{5}$
⑧ $\frac{7m}{2}$ ※ $\frac{7}{2}m$ も可 ⑨ $\frac{a}{8}-5b$ ※ $\frac{1}{8}a-5b$ も可

2.

- ① $a^2(cm^2)$ ② $\frac{xy}{2}(cm^2)$ ※ $\frac{1}{2}xy$ も可
③ $\frac{x}{3}(km/h)$ ※ $\frac{1}{3}x$ も可 ④ $0.2y(mL)$ ※ $\frac{y}{5}$ も可
⑤ $0.6x(\text{人})$ ※ $\frac{3x}{5}$, $\frac{3}{5}x$ も可 ⑥ $\pi r^2(cm^2)$

3.

- ① -4 ② 10 ③ 25 ④ 4 ⑤ -4 ⑥ 10

4.

- ① $17x$ ② $-2x$ ③ $-y$ ④ $-10x-5$ ⑤ $2a-4$
⑥ $7x-2$ ⑦ $-x-9$ ⑧ $6a+7$ ⑨ $-3x-1$ ⑩ $10x-25$
⑪ $13a-18$ ⑫ $-a-1$ ⑬ $15x$ ⑭ $-4.5a$ ※ $-\frac{9}{2}a$ も可
⑮ $-14y$ ⑯ $3a$ ⑰ $-\frac{2x}{3}$ ※ $-\frac{2}{3}x$ も可 ⑱ $24x$ ⑲ $-6x-10$
⑳ $-12x+2$ ㉑ $-9a+2$ ㉒ $4x-3$ ㉓ $-3x-1$
㉔ $3x+6$

5. ※同値な式は可

- ① $1000-52x=y$ ($52x=1000-y$ 等)
② $1000=10x+y$ ($1000-10x=y$ 等)
③ $\frac{x}{60}=y$ ※ $\frac{1}{60}x=y$ も可

- ④ $5x = 4y + 20$ ⑤ $0.8a = b$ ⑥ $120x \geq 1000$
 ⑦ $80a + 50 < 1000$ ⑧ $3000 > 3x + 4y$ ⑨ $x + 6 \geq 4x$

13ブロック

1.

ア・+ イ・9 ウ・- エ・-11 オ・- カ・6 キ・+
 ク・4 ケ・÷ コ・7 サ・÷ シ・5 ス・× セ・10 ソ・×
 タ・21

2.

- ① $x = 8$ ② $x = 4$ ③ $x = 8$ ④ $x = -18$ ⑤ $x = 5$ ⑥ $x = 1$
 ⑦ $x = -3$ ⑧ $x = -16$ ⑨ $x = -8$ ⑩ $x = -2$ ⑪ $x = 4$ ⑫ $x = -2$
 ⑬ $x = 0.7$ ⑭ $x = 3$ ⑮ $x = 8$ ⑯ $x = -2$ ⑰ $y = -3$ ⑱ $x = 8$
 ⑲ $x = 1$ ⑳ $x = -\frac{1}{3}$ ㉑ $x = -5$

3.

- ① $x = 8$ ② $x = \frac{11}{10}$ ③ $x = 3$ ④ $x = -3$ ⑤ $x = -3$ ⑥ $x = 5$
 ⑦ $x = -20$ ⑧ $x = 26$ ⑨ $x = 5$ ⑩ $x = 30$ ⑪ $x = 2$

4.

- ① $x = 9$ ② $x = 4$ ③ $x = 24$ ④ $x = \frac{6}{5}$ ⑤ $x = 15$ ⑥ $x = 9$
 ⑦ $x = 8$ ⑧ $x = \frac{3}{5}$ ⑨ $x = 6$ ⑩ $x = 9$ ⑪ $x = 20$ ⑫ $x = \frac{3}{2}$

5.

(式) $150x + 100(15 - x) = 1900$

(答え) ペットボトル8本、缶ジュース7本

6.

$$(式) 150x + 120(10 - x) = 1320$$

(答え)お茶4本、ジュース6本

7.

子ども6人、ミカン29個

※子どもをx人とするとき方程式は、 $6x - 7 = 4x + 5$

8.

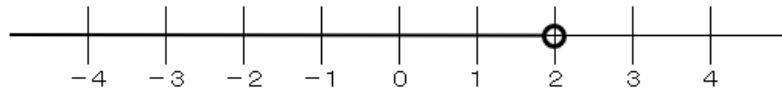
10分後 ※兄が出発してx分後に追いつくとき方程式は、

$$100(x + 20) = 300x$$

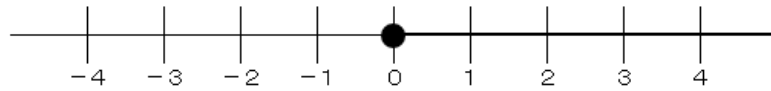
14ブロック

1.

① $x < 2$



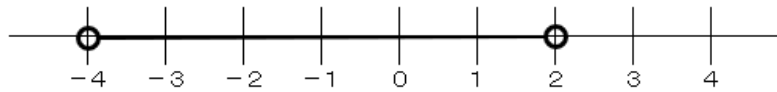
② $x \geq 0$



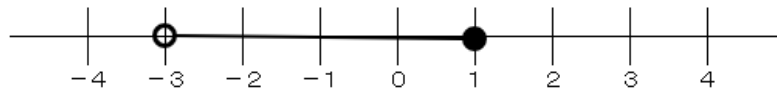
③ $-2 \leq x \leq 4$



④ $-4 < x < 2$



⑤ $-3 < x \leq 1$



2.

① $y = -5x$

② $y = 15$

③ $x = -4$

④ $y = 2x$

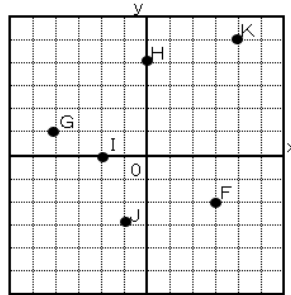
⑤ $y = 4$

⑥ $x = 5$

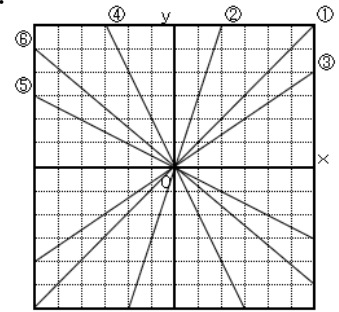
3.

- ① A (2, 3)
- B (-3, 2)
- C (0, -5)
- D (5, -1)
- E (-4, -3)

②



4.



5.

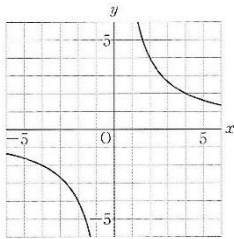
- ① $y = 2x$
- ② $y = \frac{1}{2}x$ ($y = 0.5x$)
- ③ $y = -3x$
- ④ $y = -\frac{2}{3}x$

6.

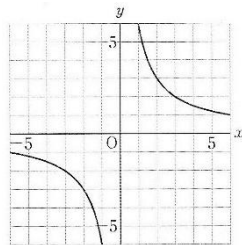
- ① $y = \frac{1}{2}x$
- ② $y = 6$
- ③ $x = -1$
- ④ $y = -\frac{2}{3}x$
- ⑤ $y = 3$
- ⑥ $x = -2$

7.

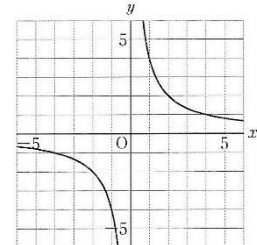
①



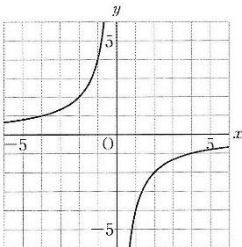
②



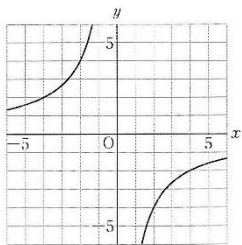
③



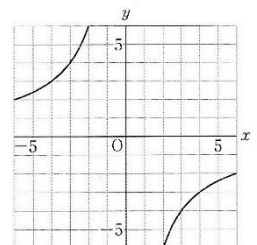
④



⑤



⑥



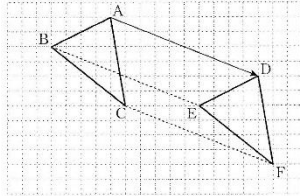
8.

- ① $y = \frac{6}{x}$
- ② $y = -\frac{4}{x}$
- ③ $y = \frac{1}{2}x$
- ④ $y = -\frac{2}{x}$

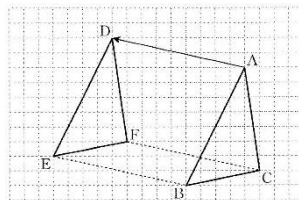
15ブロック

1.

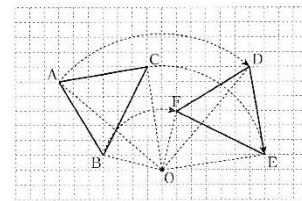
①



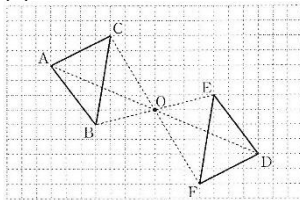
②



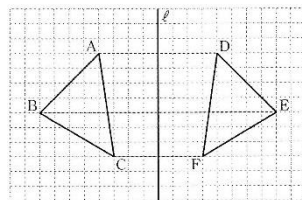
③



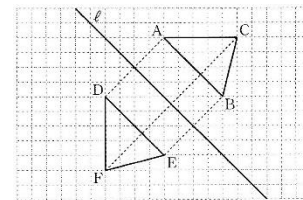
④



⑤



⑥



2.

㉞ $\angle BAC$ ($\angle CAB$)

㉟ $\angle ABC$ ($\angle CBA$)

㊱ $\angle ACB$ ($\angle BCA$)

㊲ $\angle ABD$ ($\angle DBA$)

3.

①弧

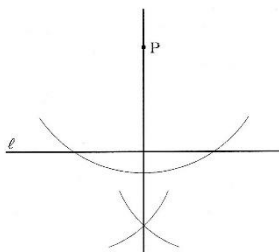
②弦

③中心角

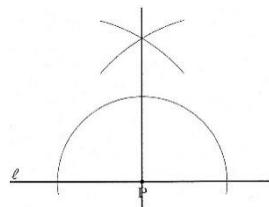
④ $OA = OB$

4.

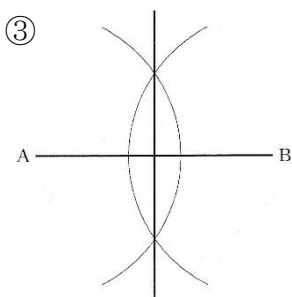
①



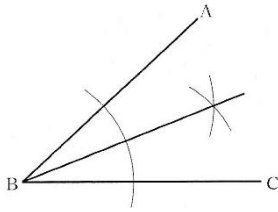
②



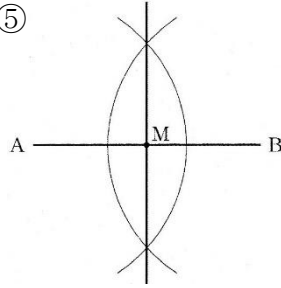
③



④

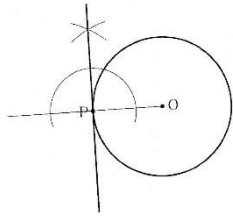


⑤

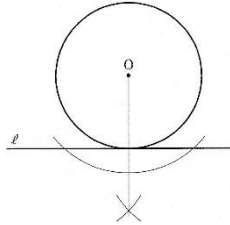


5.

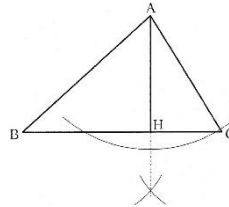
①



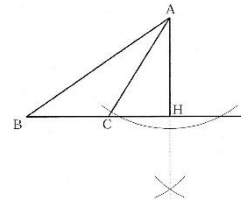
②



③



④



6.

① $2\pi \text{ cm}$ 、 $6\pi \text{ cm}^2$ ② $6\pi \text{ cm}$ 、 $27\pi \text{ cm}^2$ ③ $\frac{5}{3}\pi \text{ cm}$ 、 $\frac{25}{6}\pi \text{ cm}^2$

④ $7\pi \text{ cm}$ 、 $21\pi \text{ cm}^2$ ⑤ $3\pi \text{ cm}$ 、 $6\pi \text{ cm}^2$

16ブロック

1.

①アイオ ②ウエカ ③カ ④アイエ ⑤イ ⑥ウエ

2.

①辺BC、辺EH、辺FG ②辺AB、辺BC、辺EF、辺FG ③辺BC、
辺FG、辺CD、辺GH ④面ABFE、面ADHE ⑤面ADHE、面B
CGF

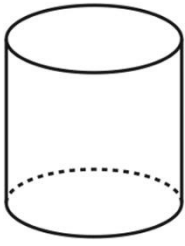
⑥面CDHG ⑦面ABCD、面EFGH、面ADHE、面BCGF

⑧辺AB、辺EF、辺HG、辺DC ⑨辺AB、辺BC、辺CD、辺DA

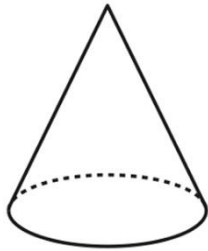
※面は、時計回りか、反時計回りに書いてあればよい。

3.

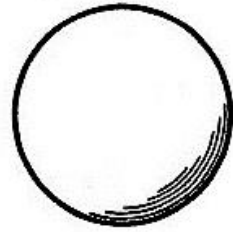
①



②



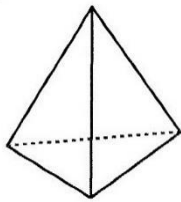
③



4.

①三角錐

②

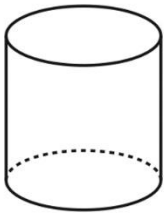


③辺R C

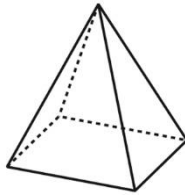
④点C

5.

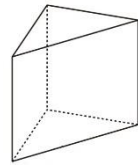
①円柱



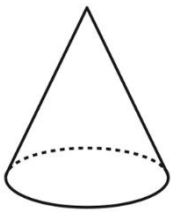
②四角錐



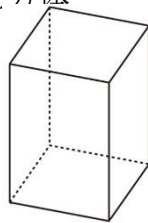
③三角柱



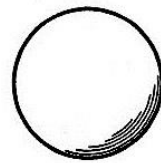
④円錐



⑤直方体



⑥球



6.

① $20\pi\text{cm}^3$

② 24cm^3

③ 40cm^3

④ 56cm^3

⑤ $\frac{175}{3}\pi\text{cm}^3$

⑥ $36\pi\text{cm}^3$

7.

- ① 64 cm^2 ② 312 cm^2 ③ 33 cm^2 ④ $36\pi \text{ cm}^2$
 ⑤ $60\pi \text{ cm}^2$ ⑥ $16\pi \text{ cm}^2$

17ブロック

1.

- ① 9人 ② 10kg ③ 20kg以上30kg未満
 ④ 30kg以上40kg未満

2.

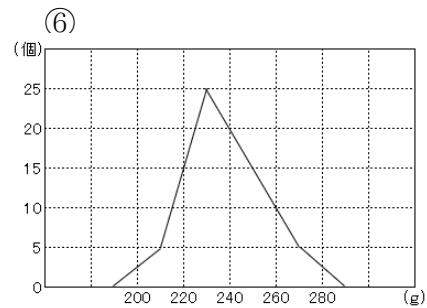
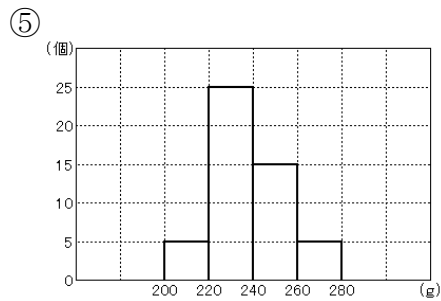
- ① 0.5秒 ② 7.5秒以上8.0秒未満 ③ 10人 ④ 0.05

3.

①

階級(g)	度数(個)	累積度数	相対度数
以上 未満			
200~220	5	5	0.1
220~240	25	30	0.5
240~260	15	45	0.3
260~280	5	50	0.1
計	50		1.0

- ② 20g ③ 30人 ④ 0.5



4.

- ① 10 m ② 33 m ③ 23 m ④ 21.9 m ⑤ 25 m
⑥ 22.5 m

5.

- ① 25回 ② 7回 ③ 5回 ④ 2回 ⑤ 平均値 理由(例) 平均値は7冊であるが、7冊を借りた人は一人もないから。

6.

①

投げた回数	表が出た回数	相対度数
500	204	0.408
600	254	0.423
700	295	0.421
800	337	0.421
900	377	0.419
1000	421	0.421

②裏

③0.42